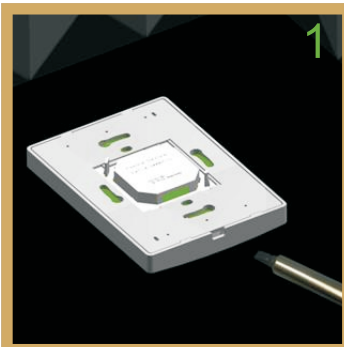
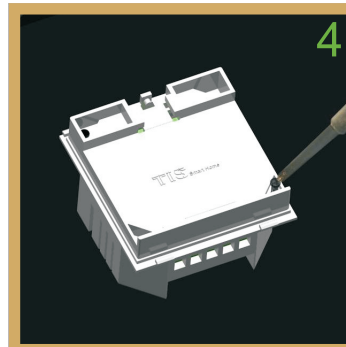


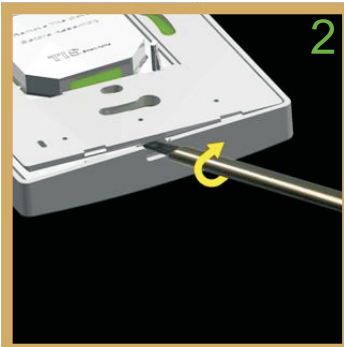
MARS PANEL INSTALLATION STEPS (After final painting or wallpaper stage)



Use big flat head screwdriver then insert it in the Panel Cover down opening hole.



Open the 2 screws on the Panel Addition cover.



Rotate the screwdriver by 90 degrees.



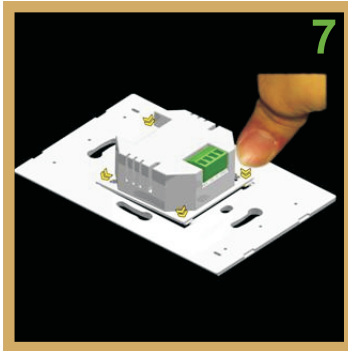
Don't throw these screws or the cover as you will need it later



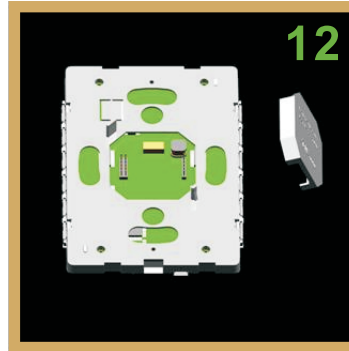
Separate the Cover, Main Panel and Wall base from each other



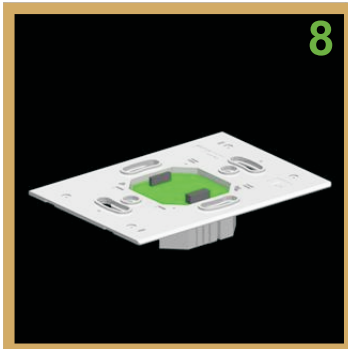
Take the wall base and Panel Addition in this correct position for connection



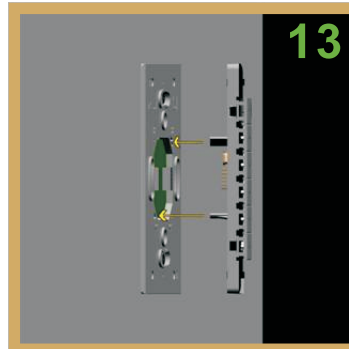
7 Assemble the upper pins then push by your fingers the down pins to assemble it fully



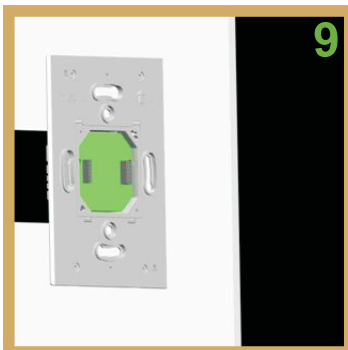
12 This should look like after you remove the Protective Plastic Cover.



8 This should look like that after the correct assembly



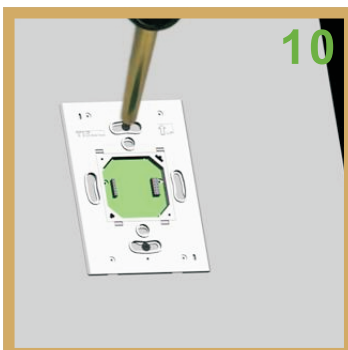
13 Connect the main mars panel vertically to the other installed part in the wall



9 Connect the wires to the panel addition then Install this assembled part in the wall



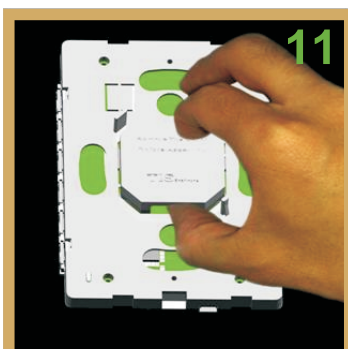
14 Install the 2 black screws in its position to fix the Mars panel to the wall base.



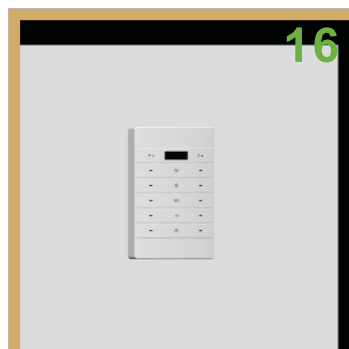
10 Tight the screws to the back box screw holes (can be installed in US back box, UK back box and Europe back box).



15 Install the Mars Cover to the panel.



11 Pull by your fingers this Protective Plastic Cover vertically, remove it and throw it.



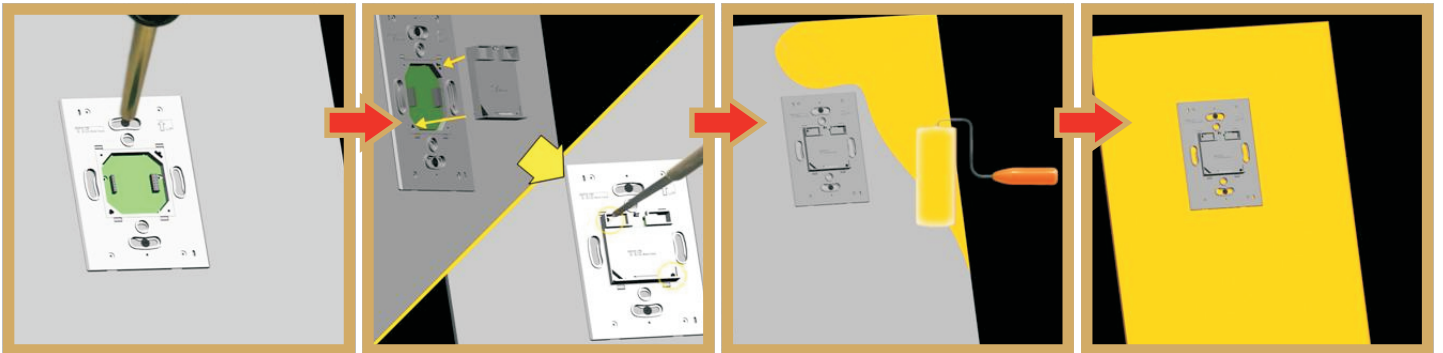
16 Assembly done.

MARS PANEL INSTALLATION STEPS (After semifinal painting)

Use the same assembly steps from 1- 10 above

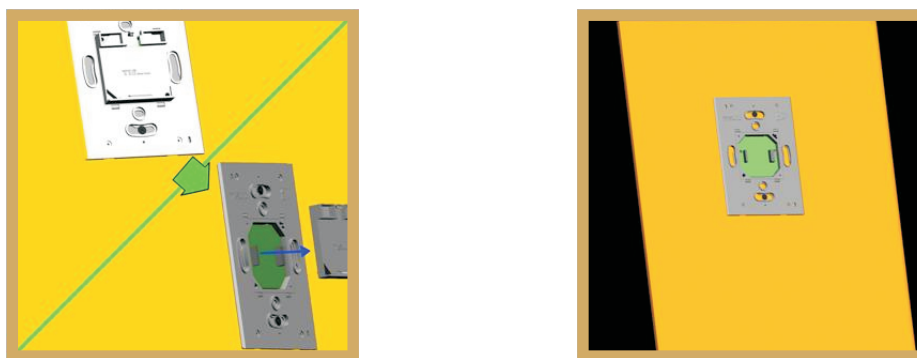
S11

Connect the Panel Addition cover by the 2 black screws to the Panel Addition.



S12

After the final painting or Wallpaper, then remove the Panel Addition Cover

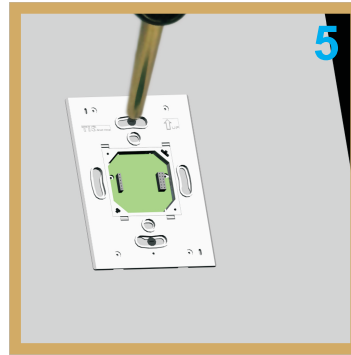


Use the assembly steps from 11- 16 above

DISASSEMBLY



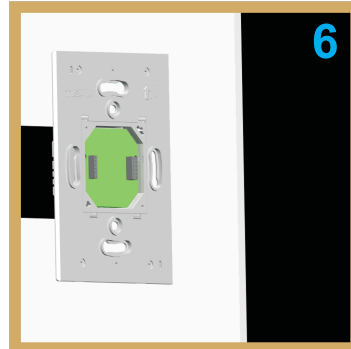
Don't remove the cover by your hands



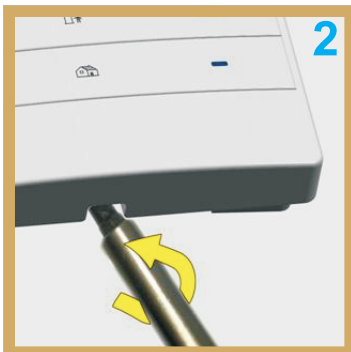
Remove the screws between back box and wall base



Use big flat head screwdriver then insert it in the Panel Cover down opening hole.



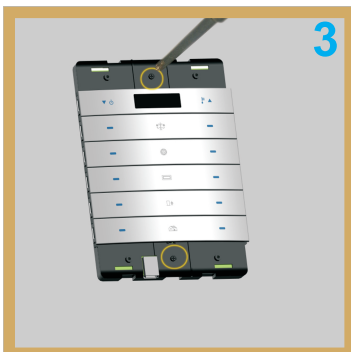
Take out the wall base



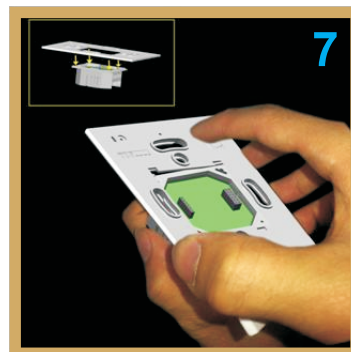
Rotate the screwdriver by 90 degrees.



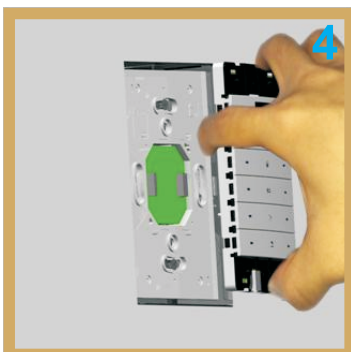
Don't push the panel addition in wrong way



Remove the 2 black screws from the Mars Panel



Remove the Panel Addition in this correct way



Pull out the panel vertically



Disassembly done